



Pride in Quality
~Since 1974~

THE LIBERTY FLOOR PLAN

www.KEMhomes.com

Square Footage:

Main Level: 1835 sq.ft.

Basement Level: 1755 sq. ft.

Room sizes are approximate.
Plans and prices subject to
change.



Marketed By:



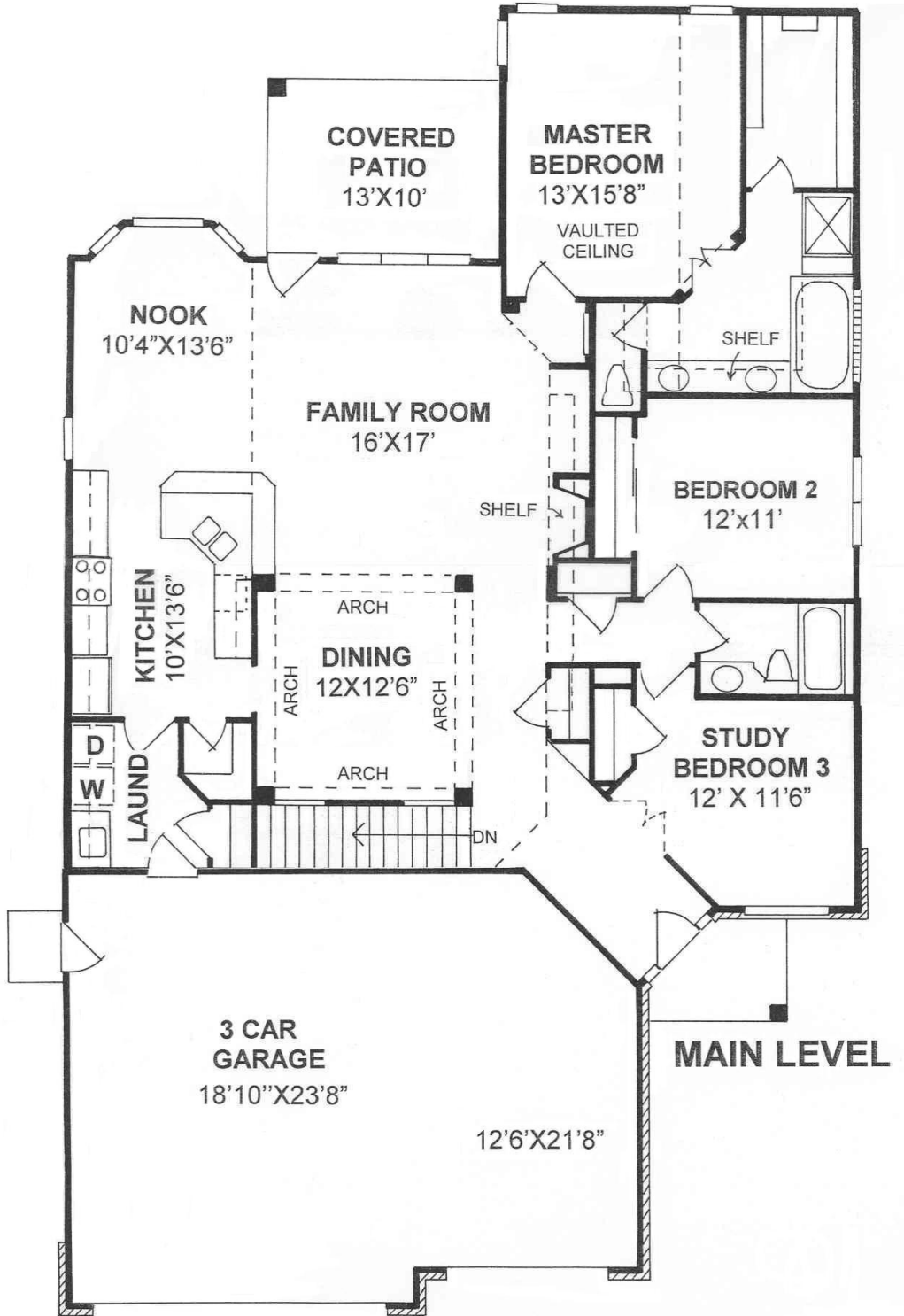
RESIDENTIAL BROKERAGE

Vicki Krug
(970) 223-6500

Financing Available:



Sue Gross
(970) 377-4828



KEM
HOMES

Pride in Quality
-Since 1974-

www.KEMhomes.com

THE LIBERTY RENDERING



"S" ELEVATION
Artist's Conception

- New floor plan
- Ranch style with 3 bedrooms
- Optional study in lieu of bedroom with double French doors
- 2 full bathrooms
- Dramatic family room with fire-place
- Open kitchen
- Large master suite with walk-in closet
- Covered front and rear patios
- 1835 Square feet finished
- 1755 Square feet full unfinished basement