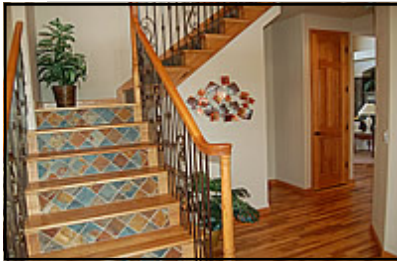


\$146,000 BELOW REPLACEMENT COST!!

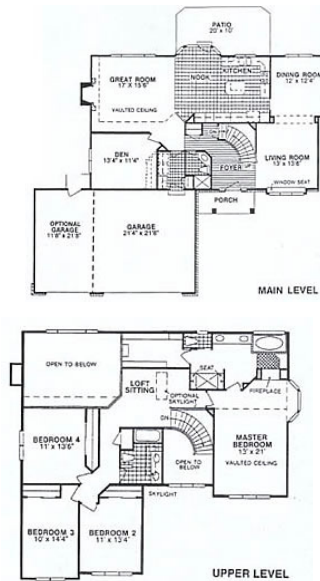


7078 Spanish Bay Dr.
~~**\$645,300**~~ **\$499,300**
HIGHLAND MEADOWS
GOLF COURSE



WYATT MODEL FOR SALE:

- 4 bedrooms + 2 3/4 baths + 3/4 bath + den
- 3-car garage
- Large kitchen with center island and desk with granite slab
- Master suite includes a see-thru fireplace with sitting area, 5-piece master bath with large dual head shower, and granite slab countertop
- Upstairs balcony
- Hickory hardwood floors throughout main floor with tile baths
- Covered deck with beautiful view of golf course
- 2800 square feet finished
- 1381 s.f. unfinished in full basement



©KEM Homes, Inc., 2005

DRIVING DIRECTIONS:

- Windsor exit (Hwy 392) east to Cty. Rd. 5
- Turn right (south) onto County Road 5
- Turn left (east) onto County Road 30
- Turn right (south) onto Highland Meadows Pkwy and go 1 block
- Turn left (east) onto Spanish Bay Drive
- House is on the left



To see more information and pictures, please see our website:

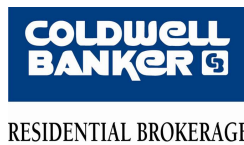
<http://www.kemhomes.com/featuredhomes.asp>



Pride in Quality
 ~Since 1974~
 www.KEMhomes.com



Marketed By:
 Vicki Krug
 (970) 419-6621



Financing Available:
 Sue Gross
 (970) 377-4828



\$2,500.00 — Special financing available on selected units through Wells Fargo Home Mortgage. Ask our sales consultant for assistance.